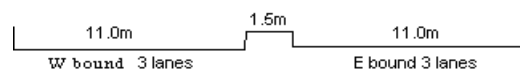
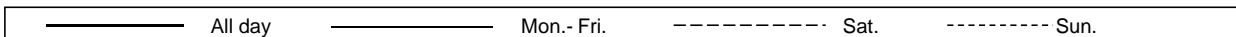
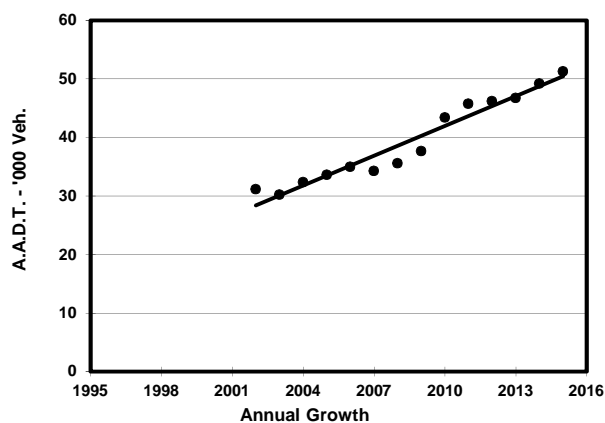
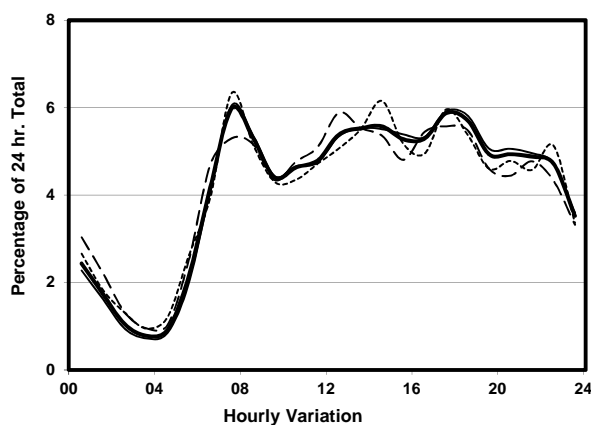
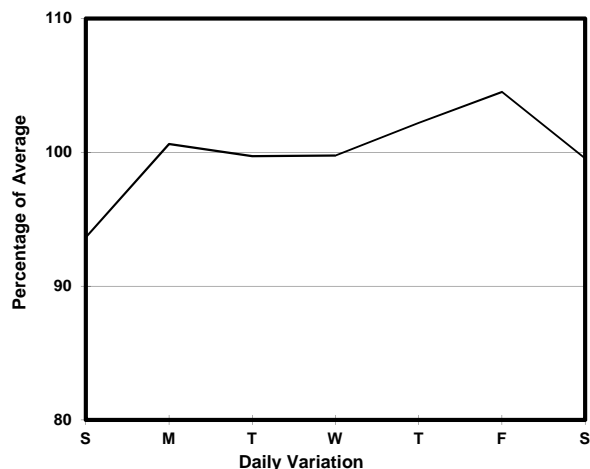
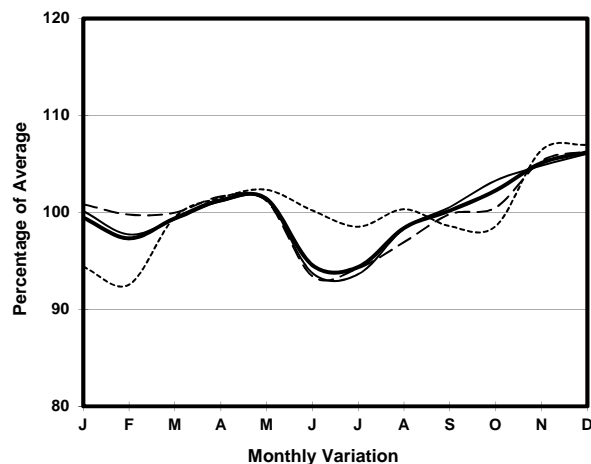


YEAR 2015
CORE STATION 5031
ROAD NETWORK MAJOR
ROAD TYPE EXPRESSWAY

LINK NORTH LANTAU HIGHWAY (from TUNG CHUNG
EASTERN INT to WESTERN END AT CHEK LAP KOK)



1. TRAFFIC FLOW VARIATION AND GROWTH



2. TRAFFIC CHARACTERISTICS (BY DIRECTION)

Parameter	All - Day	Mon. - Fri.	Sat.	Sun.
EAST BOUND				
A.A.D.T.	25720	26190	25600	24080
R 12 / 24 - %	61	61.6	59.7	58.9
R 16 / 24 - %	80.7	81.4	78.6	79.2
AM Peak Hour	0700-0800	0700-0800	0700-0800	0700-0800
One-way flow at AM peak hour	1240	1260	1240	1160
T - % (AM)	-	-	-	-
PM Peak Hour	1800-1900	1800-1900	1700-1800	1800-1900
One-way flow at PM peak hour	1650	1740	1430	1450
T - % (PM)	-	-	-	-
Prop.of commercial vehicles - 16 hr.	-	-	-	-
WEST BOUND				
A.A.D.T.	25550	25940	25620	24120
R 12 / 24 - %	66.6	66.6	65.9	67.1
R 16 / 24 - %	85.7	86.4	83.2	85
AM Peak Hour	0700-0800	0700-0800	0800-0900	0700-0800
One-way flow at AM peak hour	1830	1900	1500	1900
T - % (AM)	-	-	-	-
PM Peak Hour	1700-1800	1700-1800	1600-1700	1700-1800
One-way flow at PM peak hour	1450	1430	1440	1590
T - % (PM)	-	-	-	-
Prop.of commercial vehicles - 16 hr.	-	-	-	-

3. OTHER INFORMATION AND COMMENT